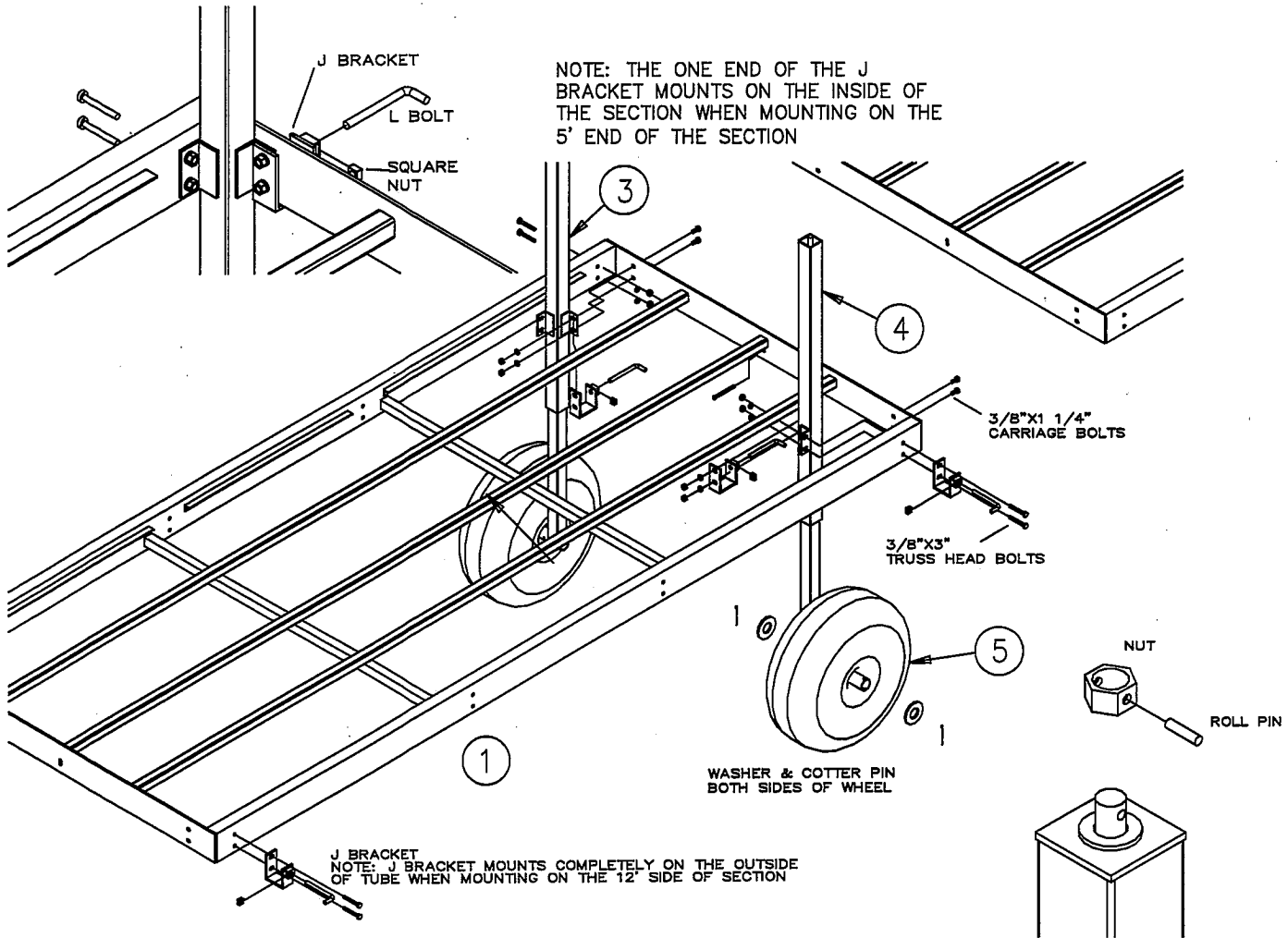


BOLT BAG #41936
SCREW JACK LEGS
#900CA, AA, TA
WIDE FIVE DOCK SECTION



955 INDUSTRIAL STREET N.E. PINE CITY, MINNESOTA 55063
 320-629-6737 (OFFICE) • 320-629-3677 (FAX)
 www.dakadock.com



KEY#	DESCRIPTION	PART#	QUANTITY
1.	ROLL-IN SECTIONAL AL FRAME	900A	1
2.	CEDAR DECK 5' WIDE x 4' ASSEMBLY (NOT SHOWN)	15480	3
3.	SCREWJACK DOCK LEGS (LEFT)	90036L	1
4.	SCREWJACK DOCK LEGS (RIGHT)	90036R	1
5.	PLASTIC DOCK WHEEL	42150	2
6.	BOLT BAG FOR SCREWJACK LEGS	41936	1
7.	BOLT BAG FOR CONNECTION HARDWARE	3910	1
8.	PLASTIC BAG 6X10X6MIL	69660027	1
9.	INSTRUCTIONS	66331055+5 PHOTOS	1



ASSEMBLY INSTRUCTIONS

#900CA/AA/TA WIDE FIVE DOCK

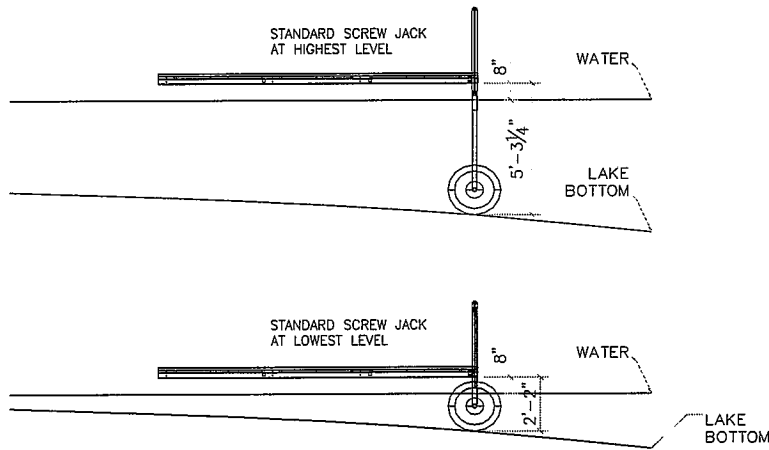
1. Determine the layout of your dock and where the screw jack legs will be going. The wheels on each screw jack leg assembly may be turned so that the wheel can be on the outside of the dock or inside (so they do not interfere with a boat lift or other structures).
2. The screw jack legs come pre-assembled in pairs – one right and one left. When installed on a frame, the wheels will be to the outside. To turn the wheel to the inside, you need to remove the roll pin in the large nut on top of the screw jack. Remove the roll pin using a small blunt nail, screwdriver or roll pin remover. Remove the large nut and washer from the top of the screw jack leg. The upper and lower part of the leg assembly may now be separated by pulling the two parts apart. Turn the lower leg assembly 180° and reinsert onto the upper leg assembly.
3. Install the screw jack assemblies onto the frame sections. Set them onto a pair of sawhorses. Make sure the frame is right side up. **Note:** The deck support angles on the inside are closest to the top. Secure each leg using 2-3/8" x 3" truss head bolts and 2-3/8" x 1-1/4" carriage bolts. **Note:** The galvanized steel "J" brackets mount using the same bolts that secure the legs. These "J" brackets are used to support and attach the next section. If the next section is going to be coming off the 12 foot side of a section, the "J" brackets get mounted on the outside of the frame.
4. With the sections fully assembled, roll the first section in place. Level the section by turning the nut on top of each screw jack leg assembly. **Note:** Turn nut clockwise to lower the dock and counter-clockwise to raise the dock. If the nut cannot be turned by hand wrench, do not force. The leg may be either fully extended or fully retracted.
5. Install the second section. The tail end of the second section rests in the "J" brackets of the first section. Install the clevis pin to secure the two sections together. The "L" bolts are used to draw the two sections together. **Note:** If the dock is to be installed and removed in multiple sections at a time, the "L" bolts must be loosened all the way to allow the sections to pivot. The clevis pin in the middle of the section will hold them together.

CAUTION: To prevent wheels from floating dock or lift, drill eight (8) 3/8" diameter holes in plastic wheel in the side wall near tread pattern. This allows wheel to fill with water for submersion in water and also to drain for removal from water.

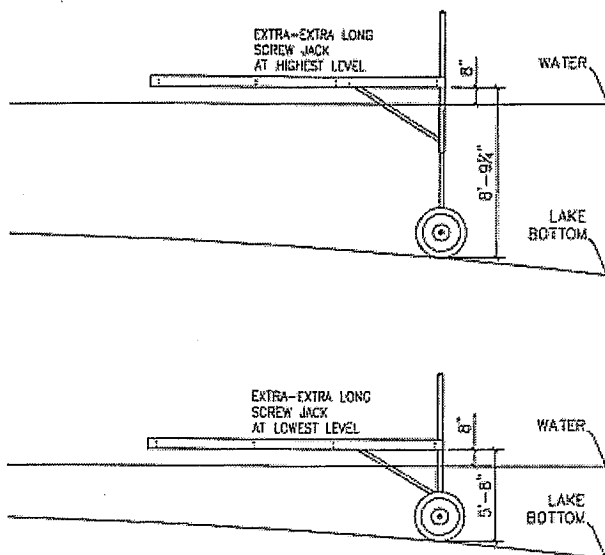
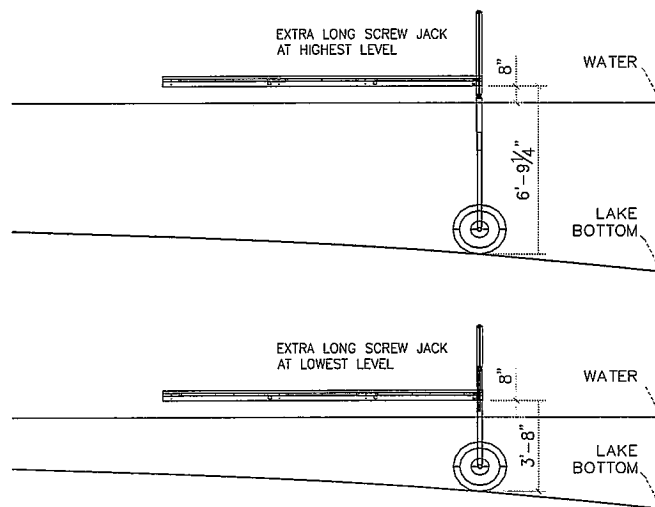
WIDE FIVE DOCK (900 CA/AA/TA)

SCREW JACK LEGS "RANGE OF MOTION"

**FIG. 1: STANDARD SCREW JACK LEGS
(MAXIMUM WATER DEPTH: 55")**



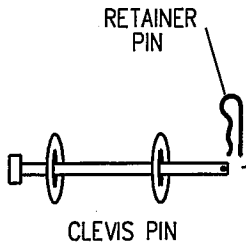
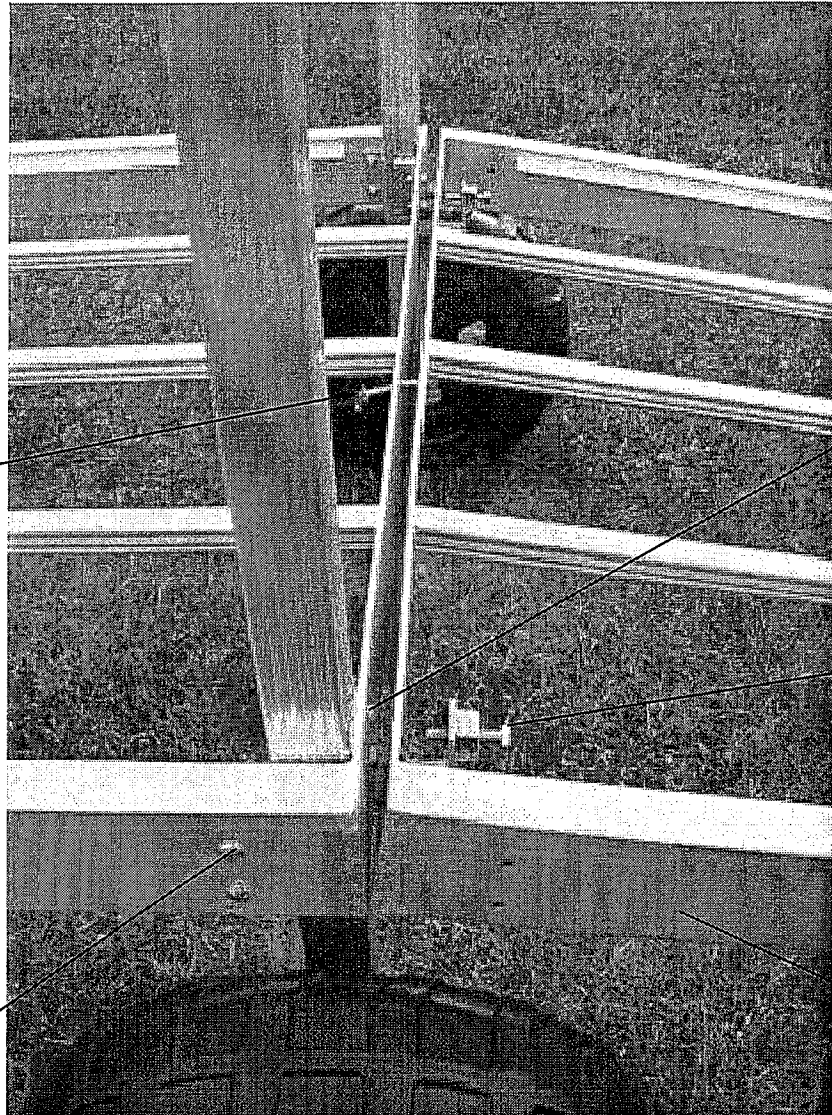
**FIG. 2: EXTRA LONG SCREW JACK LEGS
(MAXIMUM WATER DEPTH: 72")**



**FIG. 3: EXTRA-EXTRA LONG SCREW JACK LEGS
(MAXIMUM WATER DEPTH: 96")**



900A WIDE FIVE



3/8" x 1-1/4"
CARRIAGE BOLT

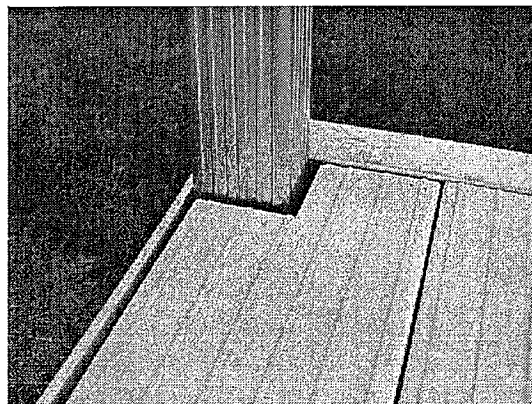


"L" BOLTS
SQUARE NUTS

NOTE: LOOSEN "L" BOLTS
TO REMOVE SECTION.
TIGHTEN "L" BOLTS
ONLY AFTER SECTIONS
ARE IN PLACE.

3/8" x 3"
TRUSS HEAD
BOLTS

RAMP SECTION



NOTCH PANELS TO FIT AROUND SCREW JACK LEGS.
MAKE 2-3/4" x 2-3/4" NOTCH
NOTE: SHOWN W/ ALUMINUM DECKING



900A WIDE FIVE



COTTER PIN & WASHER ON BOTH SIDES
PLASTIC WHEELS. ON WIDE FIVE DOCK ONLY





900A WIDE FIVE

